

**TRANSWESTERN**  
The Performance Advantage in Real Estate

6700 Rockledge Drive ■ Suite 400A  
Bethesda, MD 20817  
301.571.0900 ■ transwestern.net

FOR MORE INFORMATION PLEASE CONTACT:

**BILL WANATOSKY**  
Assistant Vice President  
301.896.9054

bill.wanatosky@transwestern.net

**BRIAN ROSSI**  
Senior Vice President  
301.896.9041

brian.rossi@transwestern.net

**OFFICE SPACE  
FOR LEASE**

**\$17.00/SF  
FULL SERVICE  
FREE PARKING**

**DID YOU KNOW  
THAT THE MARLO  
BUILDING HAS  
A FLOOR OF  
GREAT OFFICE  
SPACE BUILT OUT,  
AND READY TO  
OCCUPY?**

FOR MORE INFORMATION  
PLEASE CONTACT:

**BILL WANATOSKY**  
Assistant Vice President  
301.896.9054

bill.wanatosky@transwestern.net

**BRIAN ROSSI**  
Senior Vice President  
301.896.9041

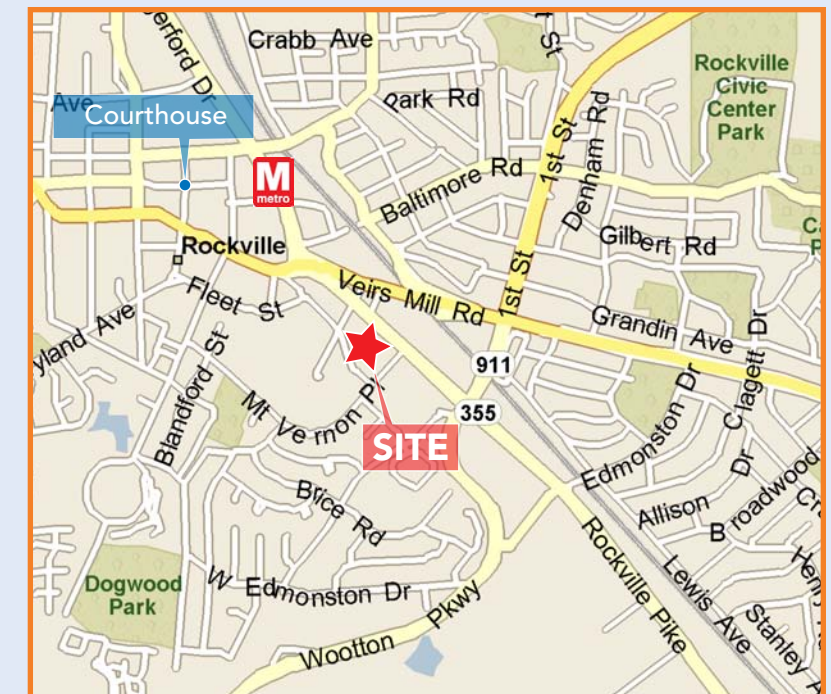
brian.rossi@transwestern.net

**TRANSWESTERN**  
The Performance Advantage in Real Estate

MID-ATLANTIC HEADQUARTERS  
6700 Rockledge Drive, Ste. 400-A  
Bethesda, MD 20817  
Phone: 301.896.9020  
Fax: 301.571.3423  
www.twmidatlanticmultifamily.com

**725 ROCKVILLE PIKE**

**ROCKVILLE, MARYLAND 20852**



**UP TO 20,800 SF PRIME OFFICE SPACE**

**OFFICE SPACE AVAILABLE**

Mezzanine Level: Suite 200 – 12,000 SF  
Suite 220 – 8,800 SF

Below Market Rent: \$17.00 SF, Full Service  
Free Parking

**STORAGE SPACE AVAILABLE**

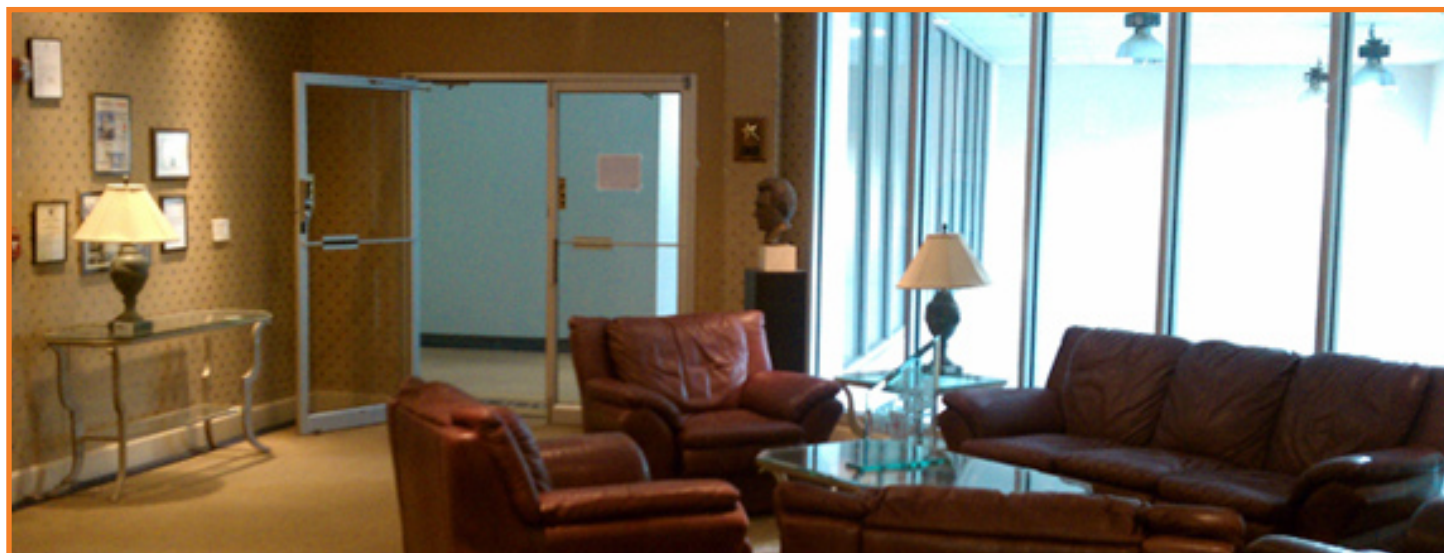
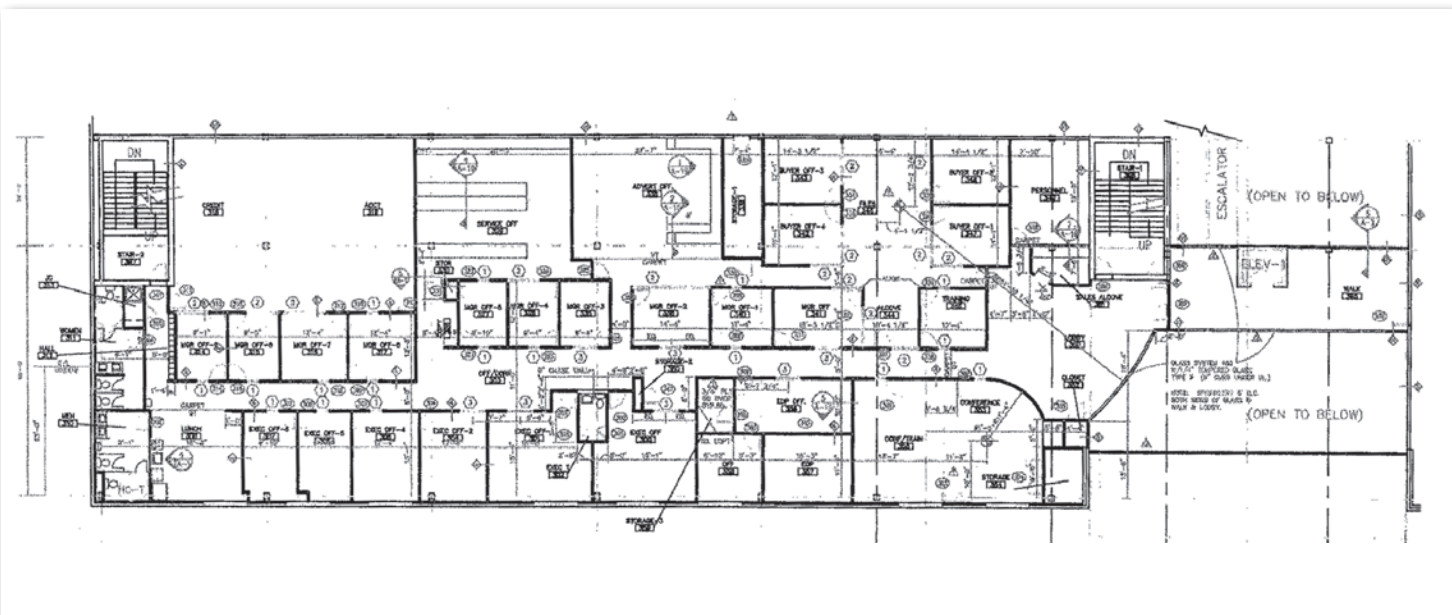
1,000 – 12,000 SF of  
Climate Controlled Storage Space  
Available at \$6.00/SF, NNN

**FEATURES**

- Unique Corporate Office Environment with High End Finishes
- Excellent Visibility on Rockville Pike
- Close Proximity to Numerous Retail Support Services
- Exterior Signage Available
- Abundant Free Surface Parking
- Private, Exclusive Office Space Opportunity

# TRADITIONAL EXECUTIVE OFFICE AREA

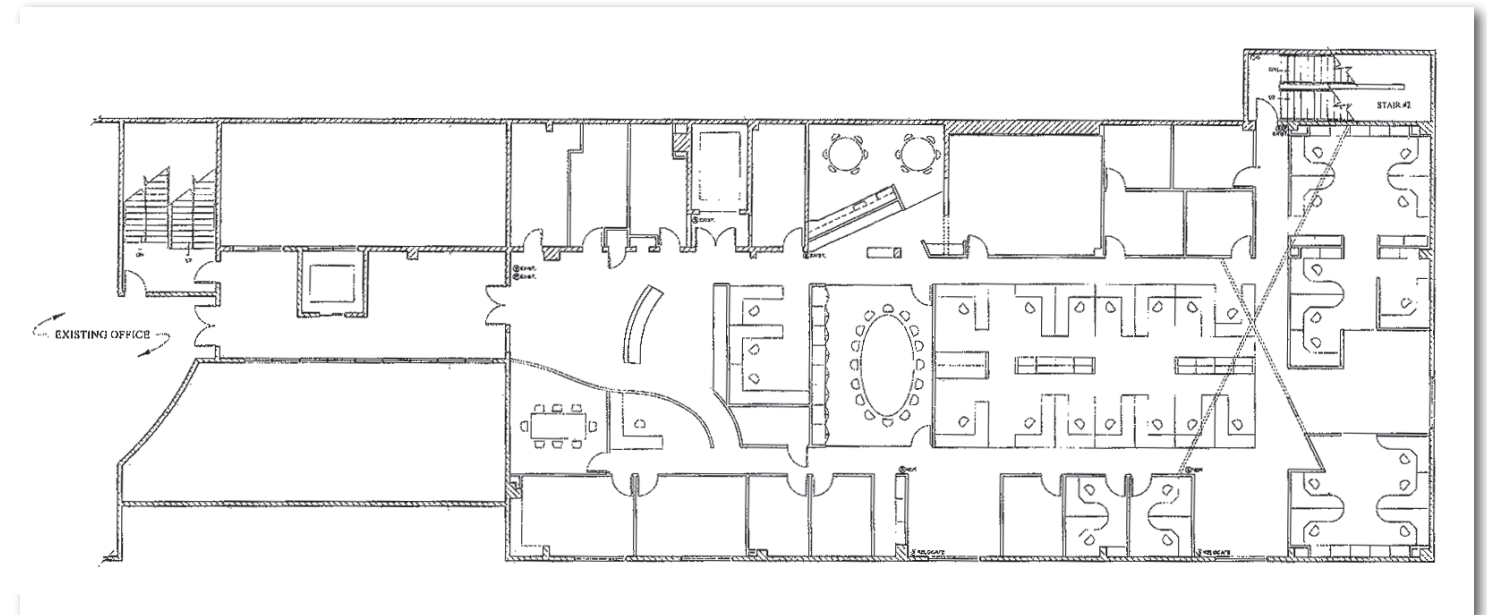
SUITE 200 - 12,000 SF



LEASING CONTACT | BILL WANATOSKY 301.896.9054 | BRIAN ROSSI 301.896.9041

# MODERN OFFICE FOR TECH FIRM

SUITE 220 - 8,800 SF



LEASING CONTACT | BILL WANATOSKY 301.896.9054 | BRIAN ROSSI 301.896.9041